

ENLACE ES 2010 ANNUAL REPORT - FINANCIAL INFORMATION

WIP UPADATED: 11-Mar-11

EES		
2010 Ingresos		
Enlace USA	\$ 1,057,760	88.1%
Other Foreign Sources	\$ 61,727	5.1%
Local Sources	\$ 8,831	0.7%
Team Labor	\$ 43,396	3.6%
Gifts-In-Kind	\$ 28,431	2.4%
Total	\$ 1,200,145	100.0%

EES		
2010 Egresos		
Support Services	\$ 170,276	16.0%
Church & Community	\$ 173,184	16.3%
Economic Development	\$ 54,969	5.2%
Research & Development	\$ 23,764	2.2%
Heathy Communities	\$ 185,980	17.5%
Project Milagro	\$ 90,215	8.5%
Infrastructure Initiatives	\$ 320,149	30.1%
Special Projects	\$ 46,624	4.4%
Gifts-In-Kind	\$ -	0.0%
Total	\$ 1,065,161	100.0%

Net Ingresos and Egresos **\$ 134,984**

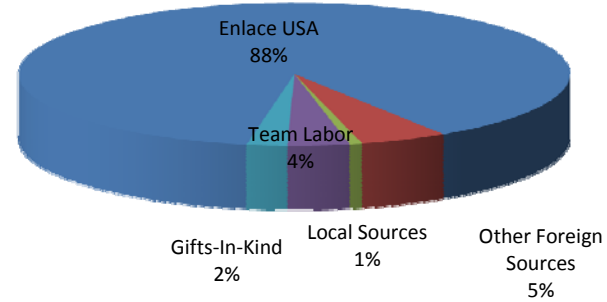
ENLACE ES

Statement of Financial Position

	2010	2009	Difference
cash and cash equivalents	\$ 419,683	\$ 95,237	\$ 324,446
grants receivable	\$ -	\$ 120,000	\$ (120,000)
accounts receivable	\$ 52,678	\$ 146,864	\$ (94,186)
prepaid expenses	\$ 24,307	\$ 5,960	\$ 18,347
Inventory	\$ -	\$ -	\$ -
property	\$ 463,627	\$ 484,955	\$ (21,328)
other fixed assets	\$ 139,515	\$ 148,385	\$ (8,870)
projects and programs in process	\$ 241,416	\$ 201,767	\$ 39,649
total assets	\$ 1,341,226	\$ 1,203,168	\$ 138,058
accounts payable	\$ 18,019	\$ 14,945	\$ 3,074
accrued expenses	\$ -	\$ -	\$ -
loans payable	\$ -	\$ -	\$ -
unrestricted & temporary restricted	\$ 1,323,207	\$ 1,188,223	\$ 134,984
total liabilities and net assets	\$ 1,341,226	\$ 1,203,168	\$ 138,058

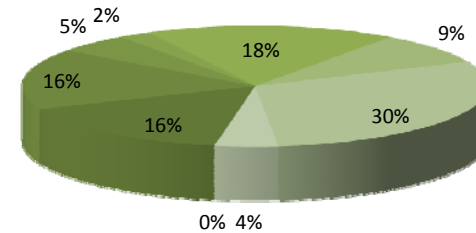
unrestricted restricted \$0 \$469,411
temporarily restricted \$0 \$733,757

ENLACE ES 2010 REVENUE



ENLACE ES 2010 DISBURSEMENTS

- Support Services
- Church & Community
- Economic Development
- Research & Development
- Heathy Communities
- Project Milagro
- Infrastructure Initiatives
- Special Projects
- Gifts-In-Kind



ENLACE USA 2010 ANNUAL REPORT - FINANCIAL INFORMATION

WIP 11-Mar-11

EUS		2010 Ingresos	
Churches	\$	545,062	40.3%
Individuals	\$	286,898	21.2%
Foundations	\$	511,380	37.8%
Corporations	\$	9,100	0.7%
Other	\$	-	0.0%
Total	\$	1,352,440	100.0%

EUS		2010 Egresos	
Administration	\$	27,872	2.1%
Fundraising	\$	36,323	2.7%
US Programs	\$	70,669	5.2%
Missionary Volunteers	\$	122,391	9.1%
Foreign Programs & Projects	\$	1,092,075	80.9%
Total	\$	1,349,330	100.0%

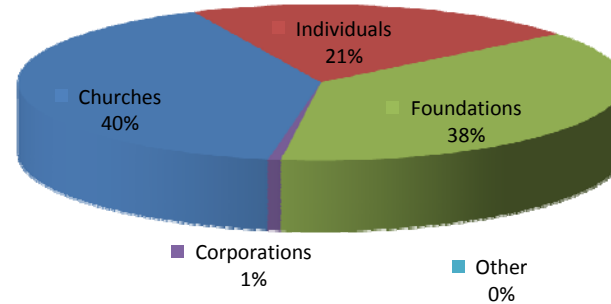
Net Ingresos and Egresos

\$	3,110
----	-------

Fixed Asset Purchases

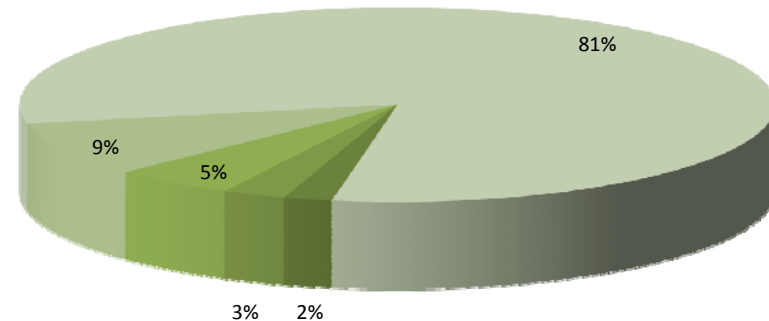
\$	-
----	---

ENLACE USA 2010 REVENUE



ENLACE USA 2010 DISBURSEMENTS

■ Administration ■ Fundraising
■ US Programs ■ Missionary Volunteers
■ Foreign Programs & Projects



EUS Statement of Financial Position	ENLACE USA		
	2010	2009	Difference
cash and cash equivalents	\$76,898	\$334,400	(\$257,502)
receivables	\$4,183	\$0	\$4,183
fixed assets	\$3,770	\$7,551	(\$3,781)
prepaid expenses	\$0	\$9,849	(\$9,849)
total assets	\$84,851	\$351,800	(\$266,949)
payables	\$2,000	\$0	\$2,000
donations payable	\$55,502	\$327,561	(\$272,059)
unrestricted & temporarily restricted	\$27,349	\$24,239	\$3,110
total liabilities and net assets	\$84,851	\$351,800	(\$266,949)